



United States Department of Agriculture

**Financial Management
Modernization Initiative (FMMI)**

FMMI Desktop Configuration Guide

Version 6.5

April 2015



Previous Change History

Version	Date	Author	Comment
5.1	04/19/2011	Accenture	Initial O&M baseline
6.0	01/15/2014	Deloitte-Lee McMullan	Draft FMMI Q1/2014 update draft
6.1	01/17/2014	Deloitte-Lee McMullan	Final FMMI Q1/2014 update
6.2	01/21/2014	Deloitte-Lee McMullan	Header correction
6.3	03/14/2014	Deloitte-Lee McMullan	SP Maint. Schedule and Java config
6.4	12/04/2014	Deloitte-Lee McMullan	Post FY14 SP Maint
6.5	4/16/2015	Deloitte-Lee McMullan	JRE Updates

Document Sign-off

Date	Name	Title

Source/Target Personnel Contact Information

System	Name Title	Contact Info



Table of Contents

FMMI Portal Desktop Requirements	4
1.1 Federal Desktop Core Configuration (FDCC)	4
1.2 FMMI Desktop Software Requirements	4
1.3 Installing Java Runtime Environment (JRE) for FMMI	5
1.4 Recommended Web Browser Settings	6
1.4.1 Browser Caching	6
1.4.2 Setting the Browser for Compression	6
1.4.3 Configure Pop-up Blocker.....	7
1.4.4 Configure TLS SSL Connection.....	7
1.4.5 Configure Compatibility View Settings	7
1.5 Section 508 Configuration.....	8
1.5.1 Install SAPGUI for Windows	8
1.5.2 Install Screen Reader Software	8
1.5.3 Configure SAPGUI for Windows	8
1.6 Appendices	9
1.6.1 SP Maintenance /IE Compatibility Schedule.....	9
1.6.2 Java (JRE) Known Config Issues	10

FMMI Portal Desktop Requirements

The FMMI Desktop Configuration Guide is intended for Agency IT POC's and Agency IT Desktop support personnel who will assist end users with desktop support needs for FMMI. The FMMI Desktop Configuration Guide provides the required software and recommended web browser settings to run FMMI.

1.1 Federal Desktop Core Configuration (FDCC)

All agencies must be compliant with the Federal Desktop Core Configuration (FDCC) to use FMMI. The Federal Desktop Core Configuration (FDCC) is an OMB-mandated security configuration. The FDCC currently exists for Microsoft Windows Vista and XP operating system software. While not addressed specifically as the "Federal Desktop Core Configuration," the FDCC was originally called for in a 22 March 2007 memorandum from OMB to all Federal agencies and department heads and a corresponding memorandum from OMB to all Federal agency and department Chief Information Officers (CIO).

For more information on FDCC, please refer to NIST guidance at <http://nvd.nist.gov/fdcc/index.cfm>

1.2 FMMI Desktop Software Requirements

The following software applications are required for FMMI desktops:

1. FMMI Supported Operating Systems
 - Microsoft Windows 7
 - Microsoft XP
 - Microsoft Vista
2. FMMI supported Web Browser
 - Microsoft Internet Explorer 10.0
 - Microsoft Internet Explorer 9.0
 - Microsoft Internet Explorer 8.0
 - Microsoft Internet Explorer 7.0 (WIN XP only)
3. Oracle Java Runtime Environment (JRE)*
 - JRE 1.8.0 U25 or lower
 - JRE 1.7.0 U71 or lower
4. Adobe Flash Player*
 - Adobe Flash Player XI (11) current patch level and below
 - Adobe Flash Player X (10) current patch level and below
5. Adobe Reader (AR)*
 - AR XI (11) current patch level and below
 - AR X (10) current patch level and below

*Supportability is maintained via incremental kernel patching due to high frequency release.

1.3 Installing Java Runtime Environment (JRE) for FMMI

FMMI requires Java Runtime Environment (JRE) Version 1.6 or higher.

To install the JRE,

1. Go to <http://java.com/en/download/manual.jsp#win>
2. Select *Windows Offline 32 or 64-bit*.
3. Select *Save As* from dialogue box.
4. Choose the folder location. (Save the file to a known location on your computer, for example, to your desktop).
5. Close all applications including the browser.
6. Double-click on the saved file icon to start the installation process. Select *Next* through each prompt of Java Setup window will appear.
7. The software installation will execute. When it completes, a Java Setup – Complete box will appear. Select *Close*.
8. Confirm successful installation and configuration through [Java test web-link](#).
9. Disable JVM (if applicable)
 - o From the Internet Explorer menu, *Select Tools > Internet Options > Advanced* tab
 - o Select *Use JRE <version>...*
 - o Deselect *JIT compiler for virtual machine enabled (requires restart)*

1.4 Recommended Web Browser Settings

The web browser settings listed below are recommended to run FMMI.

1.4.1 Browser Caching

Browser caching reduces the network load and enhances performance as static content (for example: .css or .js files) do not have to be transferred to the Web browser if they are already available in the browser cache.

To enable browser caching for the Internet Explorer (IE):

1. Select *Tools > Internet Options > General > Settings* in the *Browsing History* files frame.
 - a. Select *Automatically* under *Check for newer versions of stored pages*.
 - b. Increase the *Disk space to use* to at least 250.
 - c. Select *OK*.
2. From the Tools menu of the Internet Explorer: Choose Internet Options, Security tab, and
 - a. Select *Trusted Sites > Sites*.
 - b. Enter *.usda.gov to list if not already added and select *Add*.
 - c. Select *Custom Level*.
 - d. In the displayed *Security Settings*,
 - i. Enable *Cookies: Allow per-session cookies (not stored) or Miscellaneous: User data persistence*
 - ii. Enable *Scripting: Active scripting*
 - iii. Enable *Scripting: Scripting of Java applets*
 - iv. Select *OK*
3. Return to the Internet Options pop-up and choose the Advanced tab.
 - a. Make sure that for option "Browsing" the setting "Show friendly HTTP error messages" is not selected.
 - b. Select *OK* to save your settings and to close the Internet Options pop-up.
4. To prevent the cache from being emptied on browser close,
 - a. Select *Tools → Internet Options, Advanced tab*
 - b. In the *Security* section uncheck the "*Empty Temporary Internet Files folder when browser is closed*" checkbox, then select *OK*.
5. To allow the cache to be written on disk,
 - a. Select *Tools → Internet Options, Advanced tab*
 - b. In the *Security* section uncheck the "*Do not save encrypted pages to disk*" checkbox
 - c. Select *OK*.

1.4.2 Setting the Browser for Compression

When using the Microsoft Internet Explorer, you must activate the HTTP 1.1 setting in order for portal compression. SAP also recommends using HTTP 1.1 protocol to take full advantage of all Portal functionality.

To set the compression in Microsoft Internet Explorer:

1. From the Tools menu of the Internet Explorer, Choose the *Advanced* tab
2. Scroll to *HTTP 1.1 settings*.
 - a. Enable *Use HTTP 1.1* checkbox is selected.
 - b. Enable *Use HTTP 1.1 through proxy connections* is selected.
3. Select *OK*.

1.4.3 Configure Pop-up Blocker

Configure the browser to allow the FMMI portal in the pop-up blocker.

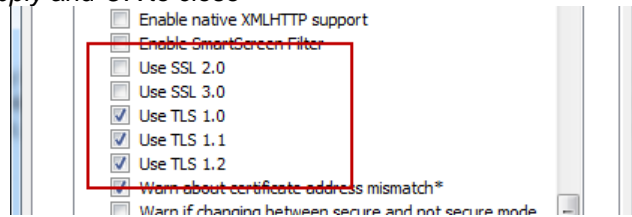
1. Select *Tools* from the browser menu
 - a. Navigate to *Pop-up Blocker*
 - b. Select *Pop-up Blocker Setting*
2. In the Pop-up Blocker Settings window
 - a. Enter *fmmi.usda.gov* in *Address of websites to allow*.
 - b. Select *Add*
 - c. Select *Close*

1.4.4 Configure TLS SSL Connection

Configure the browser to allow TLS1.0 or greater run by FMMI portal to mitigate POODLE vulnerability.

Select *Tools > Internet Options > Advanced* from the browser menu

- d. Scroll to *Settings to Security* section
- e. Select *TLS 1.0, TLS 1.1, and TLS 1.2*
- f. Deselect *SSL 2.0 and SSL 3.0*
- g. Select *Apply* and *OK* to close

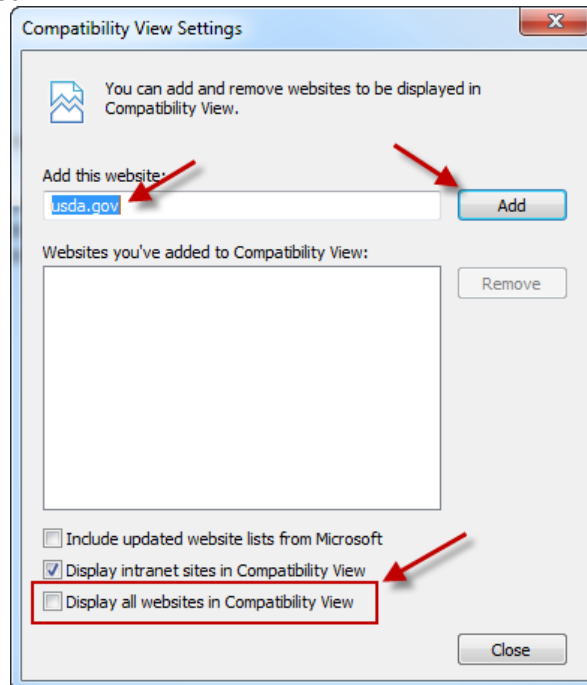


1.4.5 Configure Compatibility View Settings

Configure the browser to allow TLS1.0 or greater run by FMMI portal to mitigate POODLE vulnerability.

Select *Tools > Compatibility View settings* from the browser menu

- h. Input *usda.gov* into *Add this website*
- i. Select *Add*
- j. Or simply select *Display all websites in Compatibility View*
- k. Select *Close*



1.5 Section 508 Configuration

Some users may require screen reader extension to perform their duties. To support screen readers, the client based SAPGUI software must be installed on the users desktop and configured to integrate with the screen reader software.

1.5.1 Install SAPGUI for Windows

To obtain a copy of SAPGUI and installation instructions, please contact the FMMI Help Desk.

1.5.2 Install Screen Reader Software

To obtain a copy of Screen Reader software and installation instructions, please contact the FMMI Help Desk.

1.5.3 Configure SAPGUI for Windows

To configure SAPGUI:

1. Navigate to *All Programs* → *Control Panel* → *SAP Configuration*
2. On the *Design Selection* tab:
 - a. Disable *Use New Visual Design*
 - b. Disable *Notify when a script attaches to a Running SAPGUI*
 - c. Enable *Use Accessibility Mode*
 - d. Select *Apply* followed by *Ok*
3. Login to SAPGUI for Windows, select *Customize Local Layout (Alt +F12)* from the top right of the screen and select *Options*
4. On the *Accessibility* tab:
 - a. Verify that the *Accessibility Mode Status* is set to *enabled*. If not restart your workstation
 - b. Verify that the following options are selected:
 - i. *Include Disabled Elements in Tab Chain*
 - ii. *Display List Symbols as Letters*
5. On the *Options* tab:
 - a. Verify that the following options are selected:
 - i. *Beep at Message*
 - ii. *Dialog Box at Success Message*
 - iii. *Dialog Box at Warning Message*
 - iv. *Dialog Box at Error Message*
6. On the *Cursor* tab:
 - a. Verify that *Select Text in Edit Field in Insert Mode* is disabled
7. Select *Apply* followed by *OK*
8. Select *Help* from the top menu
9. Select *Settings*
10. On the *F1 Help* tab:
 - a. Select *in Modal Dialog Box*
11. On the *F4 Help* tab:
 - a. Select *Dialog (modal)*
12. Select green checkmark followed by *Ok*



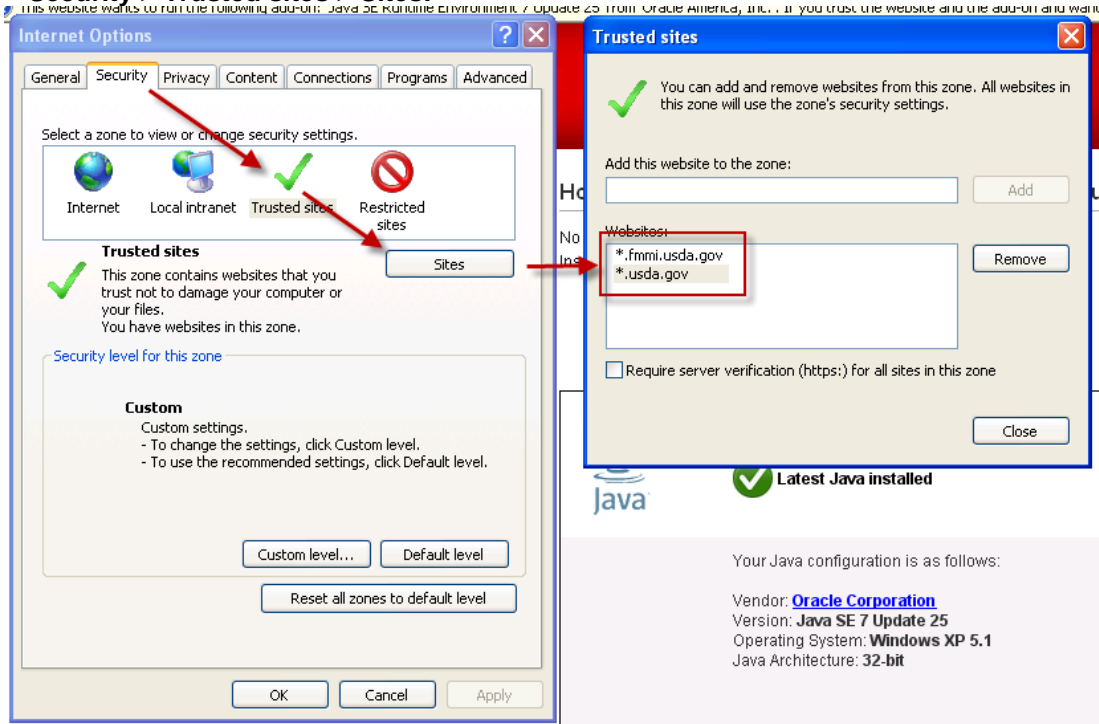
1.6 Appendices

1.6.1 SP Maintenance /IE Compatibility Schedule

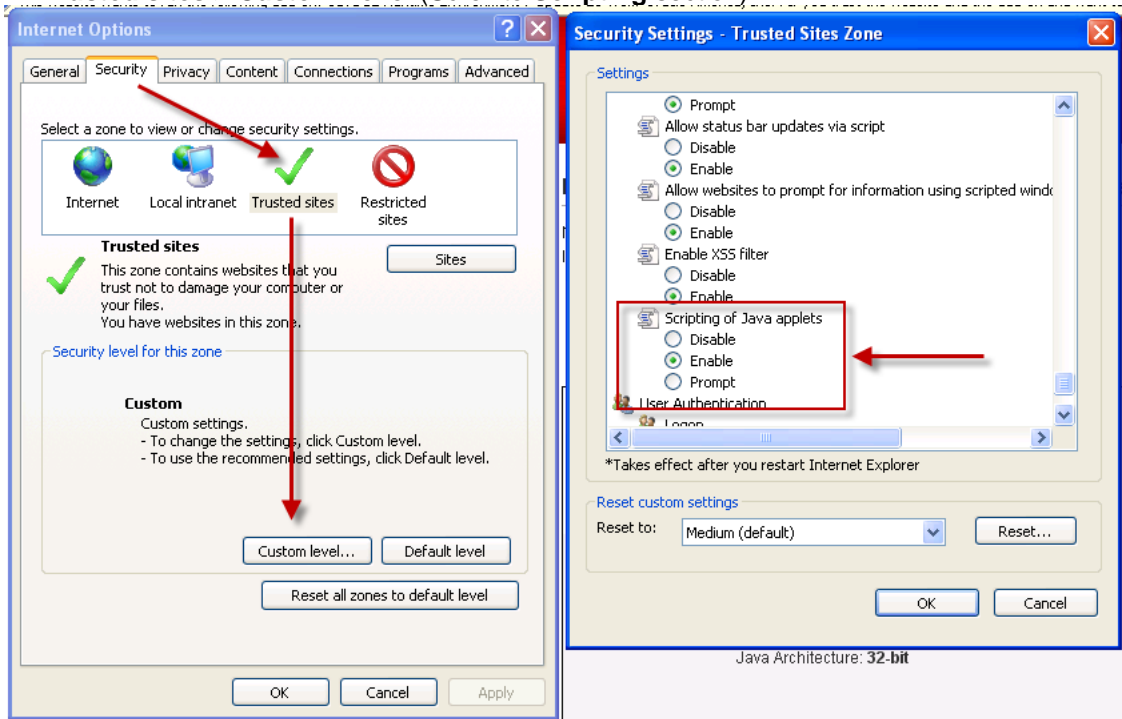
1. The current FMMI SAP ECC 6.04 SP13 does not support IE 11. There are display and functional issues associated with use in IE 11 that cannot be resolved by Compatibility View or without SP upgrade. Users experiencing these issues are recommended to downgrade to supported version of IE10.
2. The **scheduled July/August 2015 FMMI SAP Maintenance Cycle** updates will fully support IE 11.0 and below on WIN 7 32/64Bit OS and below running JRE** 7/8.

1.6.2 Java (JRE) Known Config Issues

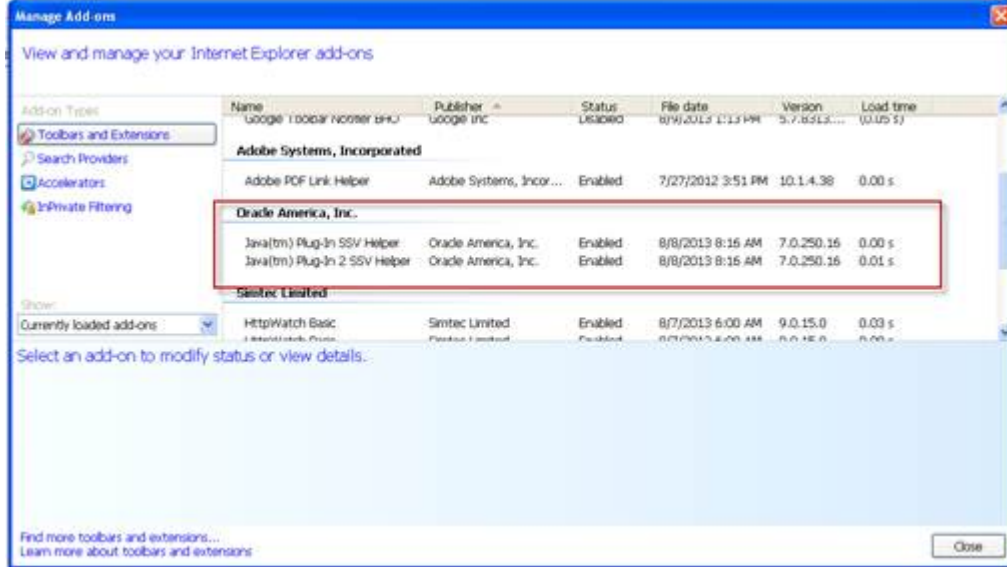
1. Ensure *.fmmi.usda.gov is included in IE Trusted Sites list: **Tools > Internet Options > Security > Trusted sites > Sites:**



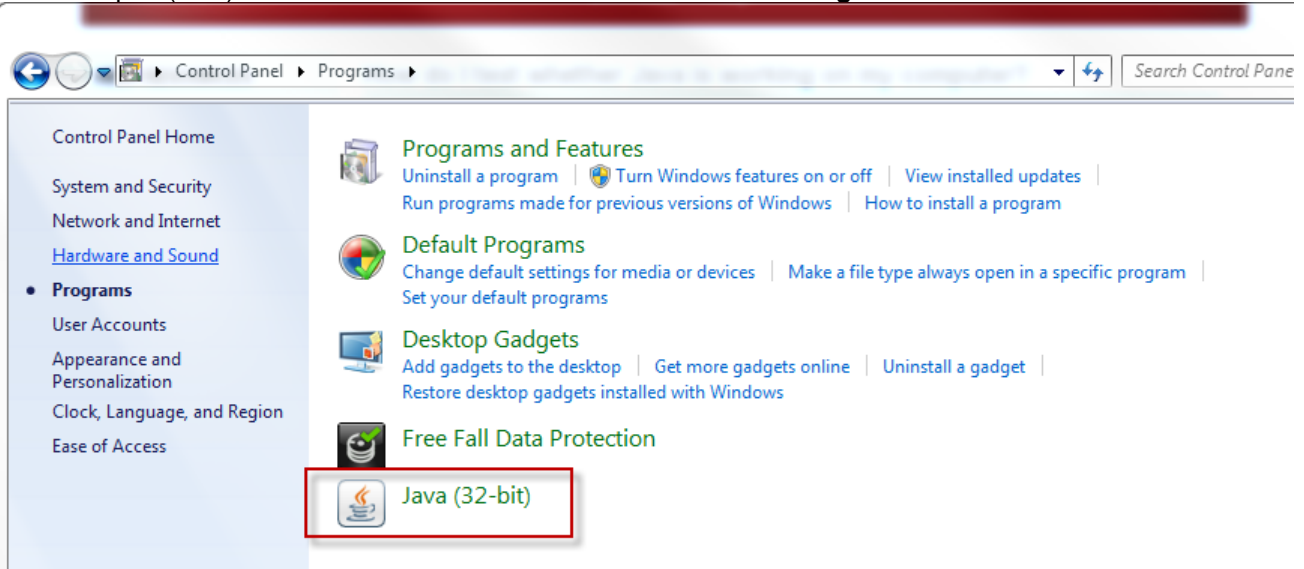
2. Ensure IE Scripting of Java Applets is Enabled: **Tools > Internet Options > Security > Trusted sites > Custom Level (Scroll to Scripting section):**



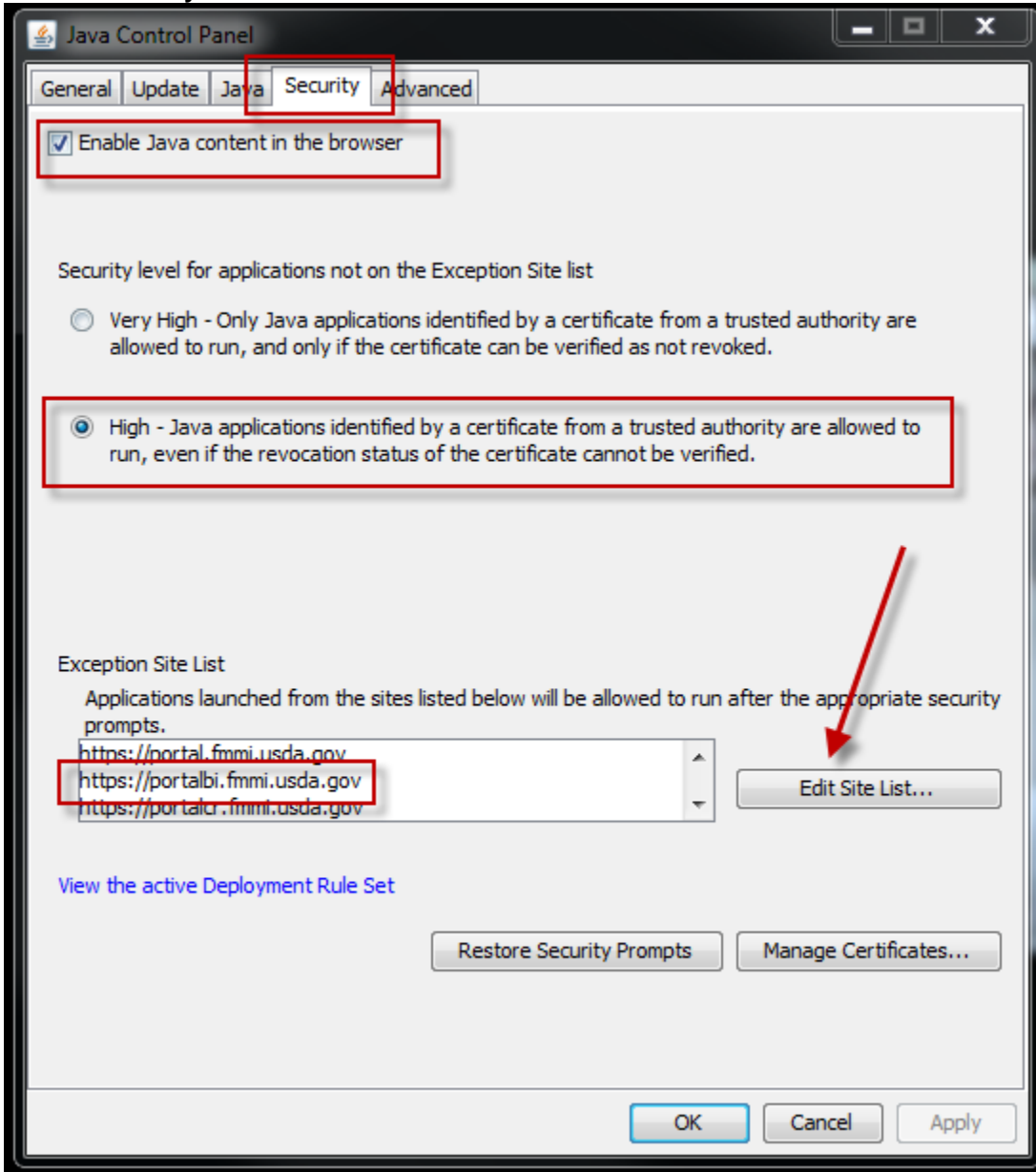
3. Ensure **Java Plug-In's** are **Enabled**: **IE Tools > Manage Add-ons** (Scroll to **Oracle** section):



4. Open (JRE) **Java Console** from **Home > Control Panel > Programs**:



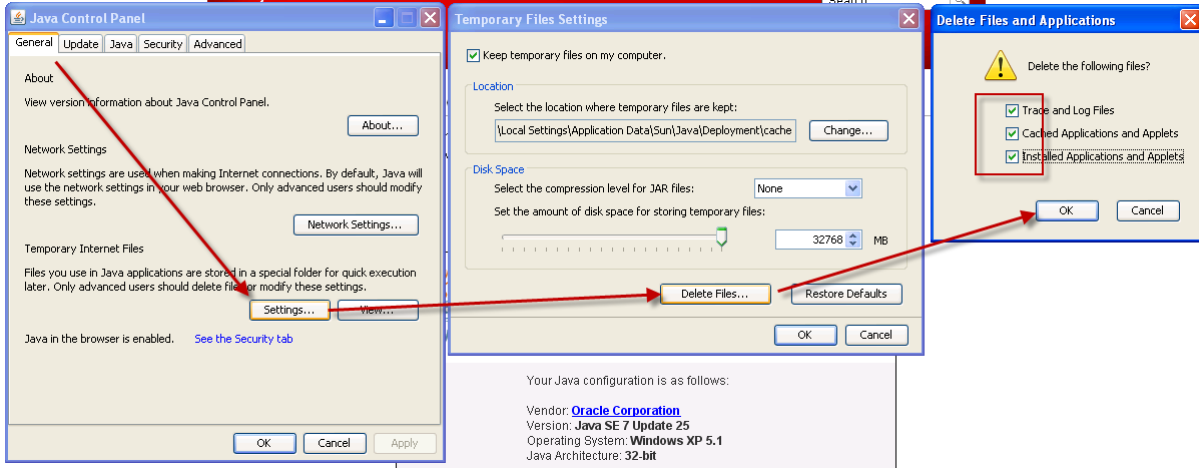
5. Select **Security** tab and ensure **Enable Java content in browser** is selected:



Newer versions of JRE require an additional Manifest Permissions attribute to run certain remote Java applications. The following exclusion sites are required to resolve this issue in the interim:

- From Windows select *Start > Programs > Configure Java > Security*
- Select *High* for *Security Level*
- Select *Edit Site List* and then add
- <https://portal.fmmi.usda.gov> (FMMI Portal alias)
- <https://portalbi.fmmi.usda.gov> (FMMI BI-Portal alias)
- <https://portalcr.fmmi.usda.gov> (FMMI CRM-Portal alias)
- <https://portalgr.fmmi.usda.gov> (FMMI GRC-Portal alias)

6. Lastly, in rare occasions users must clear their JRE cache.
 Select **General > Settings > Delete Files > OK** (with all boxes checked):



7. Please reference the **Java test site** for additional info links on how to troubleshoot:

