

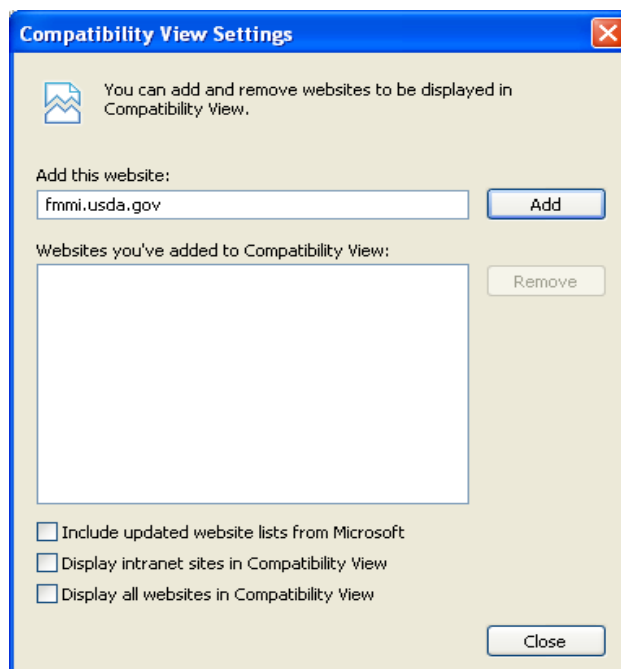
## Internet Explorer 9 Compatibility Issues

Some end-users' workstations have been upgraded to Windows 7 with Internet Explorer (IE) 9. Neither eAuthentication nor FMMI are supported with IE9 at this time. The preferred browser for use with FMMI is IE8, which has been supported on Windows 7 since November 2010.

Users can try any **one** of the following options if they are experiencing problems using IE9 on Windows 7.

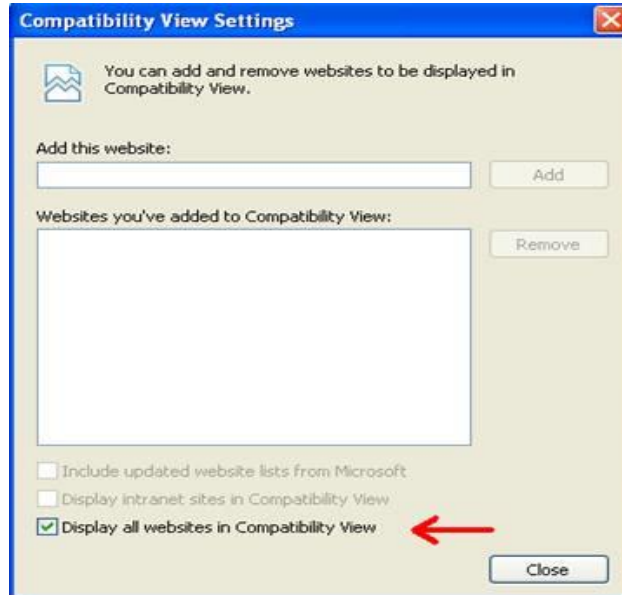
- Turn on Compatibility View within Internet Explorer and view **FMMI** web pages at 100% with no zoom.

Go to the *Tools* menu and choose *Compatibility View settings*. A new window will open where you can add **fmmi.usda.gov** to the "Add this website:" text box. Click **Add**. Click **Close**.



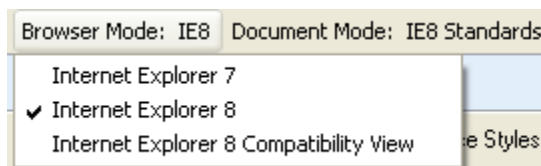
- Turn on Compatibility View within Internet Explorer for **all** web pages at 100% with no zoom.

Go to the *Tools* menu and choose *Compatibility View settings*. A new window will open where you can select the check box **“Display all websites in Compatibility View”**. Click **Close**.



- Change IE9 to browse in IE8 mode.

Open IE9 and press the F12 key (or Tools > Developer Tools Menu). Click **Browser Mode** and select **IE8**.



If these settings do not fix the issue then contact your Desktop Support Team further assistance.